

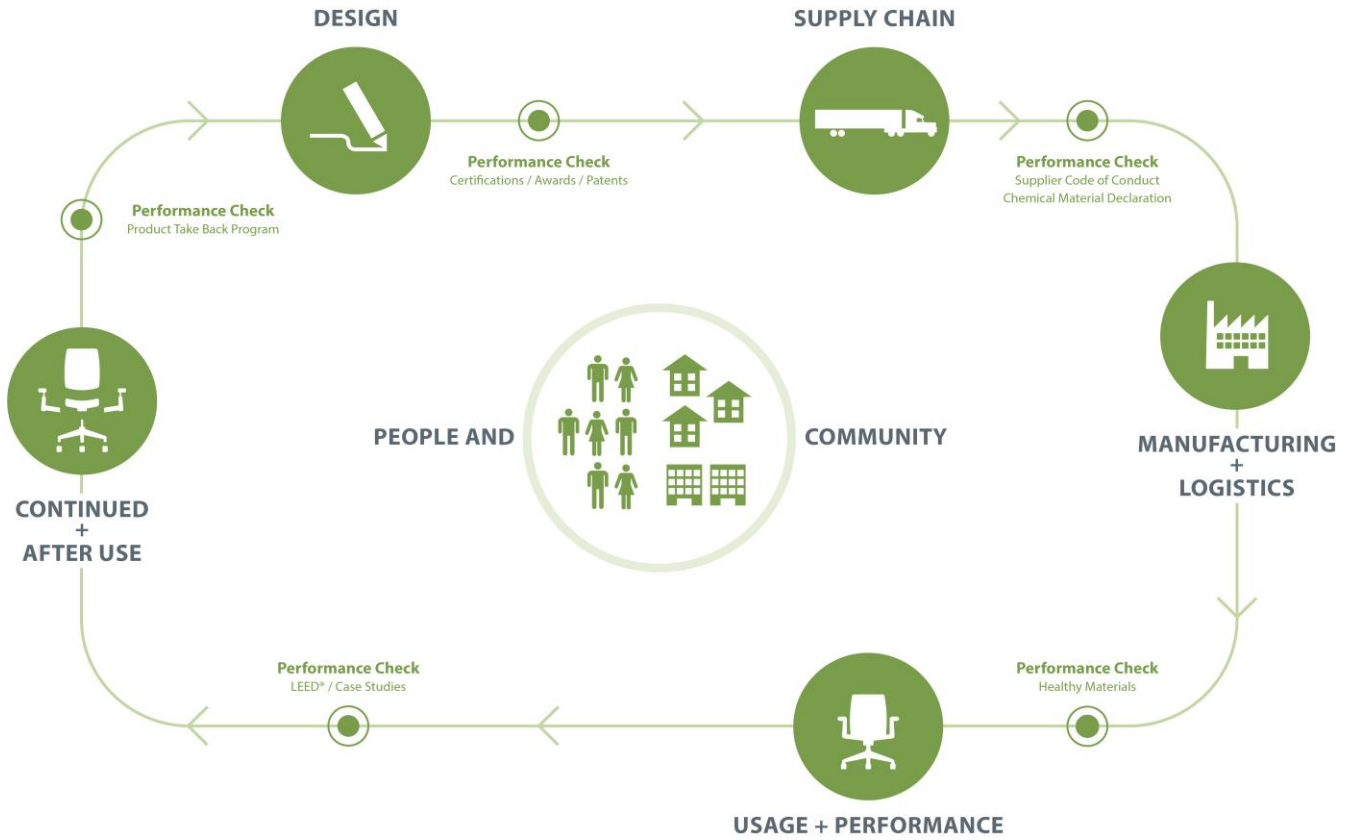
Product Environmental Data Sheet

Sector: North America



Soji™

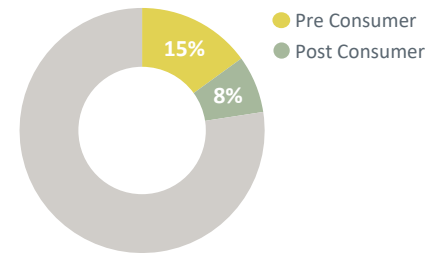
Category: Seating



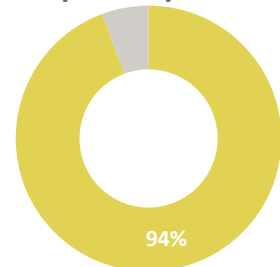
Thoughtfully designed and informed by ergonomics, Soji is a highly-adjustable task chair that syncs your body and mind the second you sit down. Soji fuses comfort and elegance to promote performance and well-being wherever work gets done.

Soji is manufactured in a zero landfill, ISO 14001 certified facility in Bruce, Mississippi, USA. Haworth will partner with our customers in determining the best end-of-useful life solution for Soji, including the option of returning the product to our Holland, MI recycle center for responsible recycling.

Recycled Content



Recyclability



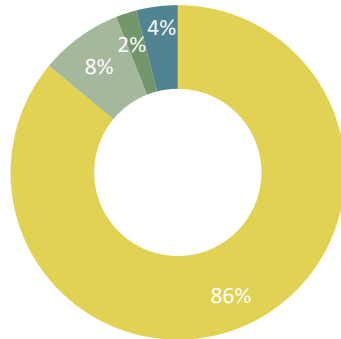
Material	Material Weight
Plastic	15.13 lbs (37%)
Steel	11.79 lbs (29%)
Aluminum	7.29 lbs (18%)
Wood	3.98 lbs (10%)
Foam	2.21 lbs (5%)
Other	0.08 lbs (0%)
Total	40.48 lbs (100%)

Life Cycle Assessment (LCA)

Carbon Footprint	120 kg CO ² eq.
Acidification	0.40 kg SO ₂ eq.
Eutrophication	0.052 kg N eq.
Smog	6.1 kg O ₃ eq.
Ozone Depletion	7.40E-07 kg CFC11 eq.

Impact by Life Cycle Stage

- Procurement
- Manufacturing
- Distribution
- End of Life



Material Chemistry

Haworth is committed to providing our customers with products that support safe and healthy environments. We are working diligently toward the ongoing reduction of hazardous chemicals associated with parts and materials we source, as new safer alternatives become commercially available.

These include, among others, PVC, benzidine dyes, hexavalent chromium, certain hazardous phthalates, PBDE flame retardants, and those chemicals known to contribute towards ozone depletion.

We are committed to achieving our goal of being transparent with our customers on our progress.

Haworth Banned Chemical List Compliant

Healthier Hospitals Healthy Interiors Compliant

Certifications



Greenguard Certified

Certification # 112273-420

Refer to spot.ul.com for certificate



BIFMA level 3 certified

Refer to NSF.org for certificate



mindful MATERIALS

This product can be found in Haworth's mM library

Building Standards

In support of building standards such as Leadership in Energy and Environmental Design, LEED® v4 and WELL Building Standard®v2:

Low Emitting Materials:

- Most Haworth products comply with ANSI/BIFMA e3-2014e Credit 7.6.1 and 7.6.2 demonstrated via GREENGUARD certificates found on spot.ul.com

Responsible Sourcing of Raw Materials:

- Most Haworth wood products are available as FSC® Mix 70%.
- Most Haworth products are composed of high recycled content.

Environmental Product Declarations (EPDs):

- Product-specific Type III EPDs are available for select high-volume products.